

R3232*digital video router***32X32**

Compact 32X32 Router

Features

- Small Frame Size – 32X32 in 1RU
- SD/HD/3G Multi-rate from 143Mbps to 3.0Gbps
- Auto-equalization on all inputs
- Auto-reclocking or by-pass mode on all outputs
- Digital video signals for SMPTE 259M, 292M, 372M, 424M
- Optional CP832 control panel for local control
- Supports PESA router control and many 3rd party control systems
- CP-S software included for configuration, installation, and management



The PESA R3232 provides a reliable and highly effective method of switching SDI equipment

PESA's R3232 routing switcher combines exceptional resilience with cost, space and power efficiency; in part to our highly effective method of packaging a professional grade router solution is just a 1 RU space. The R3232 matrix provides a simple, reliable, and highly effective method of streamlining any installation using multiple sources and outputs. Each 3G-SDI source is accessible at all times from any location using the optional CP832 front-panel pushbutton panel or by using the included PESA CP-S software GUI for network control and switching commands.

An Affordable routing switcher solution for small to mid-sized digital video distribution

Simplify the process of routing by connecting all the equipment in your facility to a single broadcast grade routing switcher that features 32 inputs and 32 outputs for auto-switching SD, HD, and 3G-SDI, all in a compact rack mount chassis.

Includes High Quality SDI Equalizers and Reclockers up to 3Gb/s

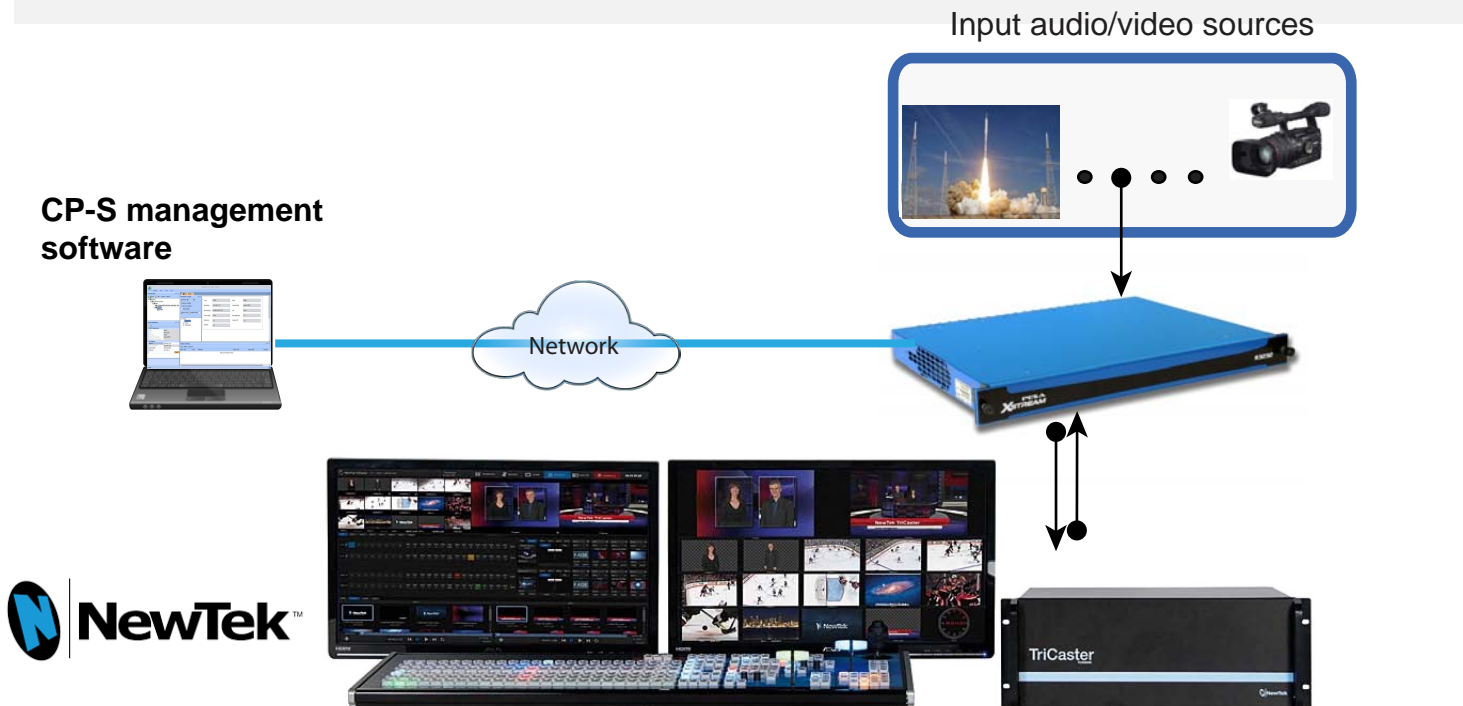
To ensure no-glitch video on longer distance cables, each R3232 includes equalizers on each input and reclockers on every output. With SDI equalizers, your cameras, DVR's or high definition video sources can be installed on longer distance cables without the worry of serious signal degradation. On each output, reclockers allow signals to be re-generated at the appropriate data rate for SMPTE compliant SDI-SDI, HD-SDI, or 3G-SDI. With reclocking at 3Gb/s, high performance video signals such as HD or 2K in 4:4:4 or 4:2:2 can be connected.

Easy to share SDI, HD-SDI, and 3G-SDI Signals Simultaneously

PESA's R3232 makes it easy to run SD/HD/3G equipment simultaneously. The router can auto detect a SMPTE compliant input and pass it through the switch fabric unchanged. Each output can status the signal format and auto adjust the reclocking output to match. For signal output formats that cannot be detected, the router automatically sets the output to by-pass mode.

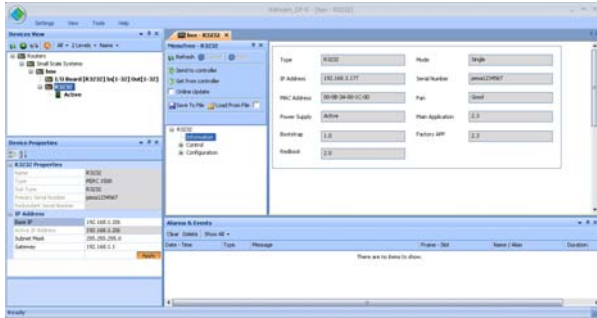
NewTek TriCaster integration

The R3232 significantly expands TriCaster's access to video sources. NewTek has added native support for PESA's P1N router control protocol to its product, so users can control the new R3232 router from the TriCaster GUI. Plus, TriCaster's three SDI outputs can be connected as sources through the R3232 and routed to multiple downstream devices.



CP-S management software included

Each R3232 includes the easy-to-use CP-S control software which allows users to setup physical X/Y pushbutton control panels, custom on-screen user panels, or routing capabilities directly from a PC desktop through an intuitive GUI. The software allows users to configure the system, setup control panels, diagnose problems, and monitor health of the total system



Optional Control Panel - CP832

Ethernet control panel with 32 shared input and output pushbutton panel with power supply.



Digital Specifications

Digital Video Specifications

INPUTS/OUTPUTS	
Number	32
Type	Standard 75 Ohm, self-terminating, unbalanced BNCs with auto-EQ. conforming to SMPTE259M, SMPTE292M and SMPTE424M.
Return Loss	≥15dB 1MHz to 1.5GHz; ≥10dB, 1.5GHz to 3GHz.
Equalization	300m auto-equalization Belden 1694A or equivalent at 270Mbps.; 100m auto-equalization Belden 1694A or equivalent at 1.5Gbps; 80m auto-equalization Belden 1694A or equivalent at 3Gbps
Level	800mVpp, ±10%
SIGNAL SPECIFICATIONS	
Rise/Fall	≤ 600ps +/-10% SD SMPTE259M; ≤ 270ps HD SMPTE292M; ≤ 135ps 3G SMPTE424M.
Overshoot	≤ 10% of amplitude max.
Alignment Jitter	≤ 0.2 UI from 100kHz to 150MHz SMPTE259M or SMPTE292M; ≤ 0.3 UI from 150MHz to 300MHz SMPTE424M.
Timing Jitter	≤ 1.0 UI from 10Hz to 100kHz SMPTE259M or SMPTE292M; ≤ 2.0 UI from 10Hz to 100kHz SMPTE424M.
Reference Inputs	Two independent 75 ohm BNC connectors, 0.5Vpp to 2.0Vpp; PAL, NTSC or Tri-Level sync.
Data Rates	143Mbps to 3Gbps
Form Factor	1RU
Mechanical	19.00W X 1.75H X 14.75D
Weight	482.6mm X 44.45mm X 372.65mm 12lbs

Environmental & Miscellaneous

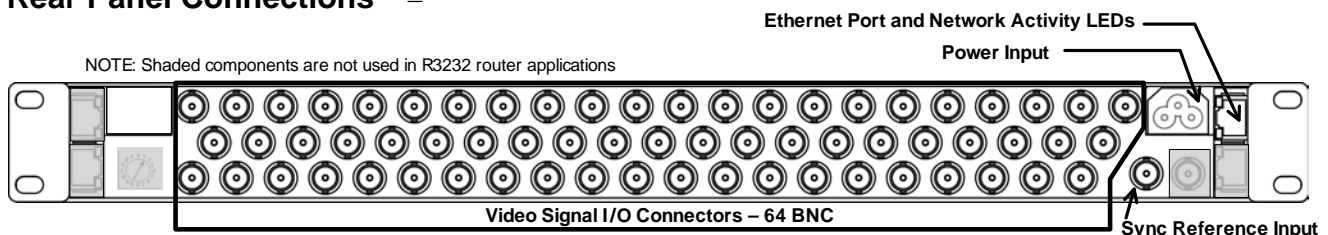
AC Input Connections	IEC 320C6 socket (accepts IEC 320 C5 line cord)
Network Control	Supports CP832 control panels NOTE: Used with CP-S software. Network panels will not operate with P2K or 3500PRO
Input Voltage	90-260 VAC, 47-63Hz
Operational Temp	0-40 degrees C
Operational Humidity	90% Non-condensing

Part Number

R3232	32X32 Routing Switcher, 1RU, PS, Supports data rates from 143Mbps to 3Gbps SMPTE 259M, 292M, 424M, DVB/ASI
-------	--

Rear Panel Connections

NOTE: Shaded components are not used in R3232 router applications



Sync Reference Connector – The BNC Sync Reference connector on the rear panel allows you to connect an independent source of sync reference to the router. This input is self-terminating.

Video Signal I/O Connectors - 64 BNC connectors for connecting 32 video input signals and 32 output destinations to the R3232 router.



ORDERING INFORMATION

U.S. Corporate Headquarters

PESA

103 Quality Circle, Suite 210

Huntsville, Alabama 35806

TEL: +1 256-726-9200

FAX: +1 256-726-9271

sales@pesa.com

Warranty:

Products manufactured by PESA are manufactured for performance and reliability. PESA warrants the PESA XSTREAM Brand of products against defects and workmanship for a period of one year.

Services:

Customer support is available 24 hours a day, 7 days a week by calling 1-800-323-7372.

International customers call
+1 (256) 726-9222.

In addition to our customer service support center, we offer extended warranties and online technical resources via our website at: **www.pesa.com**

On site or online training is available for control system operations, technical, and maintenance training. Contact our technical support group for additional information.

Specifications subject to change without notice.