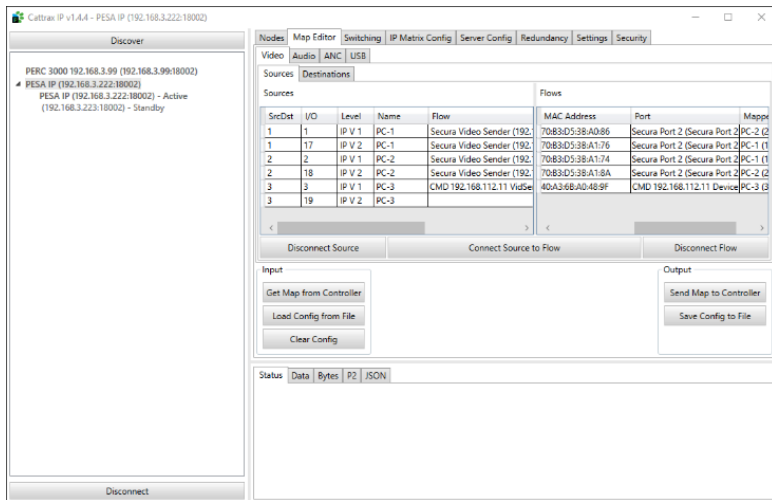


## System Configuration Software for IP Routing Applications

PESA's Cattrax suite of system configuration and control software is used to configure and monitor the PESA PERC3000-IP System Controller device for IP routing installations. Cattrax applications run natively on a Microsoft Windows® based host computer.

With PESA Secura systems, the Cattrax-IP application must be installed in conjunction with either Cattrax or Cattrax-J on the host PC. The Cattrax host, combined with a PERC-3000-IP System Controller becomes an integral part of a complete system for configuring and controlling Secura Receive and Transmit endpoints through Ethernet fabric.

Cattrax and Cattrax-J are the base applications for building router configuration files. While similar in function, in many specialized installations, PESA IP routing infrastructures are installed in secure or limited access facilities. For such situations, PESA's Cattrax-J control software with Military-Unique Features provides a secure, encrypted, password-protected application. As of 2019, PESA has received JITC Interoperability (IO) certification renewal for Cattrax-J. The Cattrax-J software application is required when configuring the encryption control functions for the Secura HTR devices for matrix environments and Secura AVoIP and KVM in IP switch environments.



Cattrax-IP is the application which configures the Virtual Matrix (VM) element of the PERC3000-IP controller device. The VM function allows IP video sources and destinations to be included in a router configuration file in the same way an SDI signal would be configured.

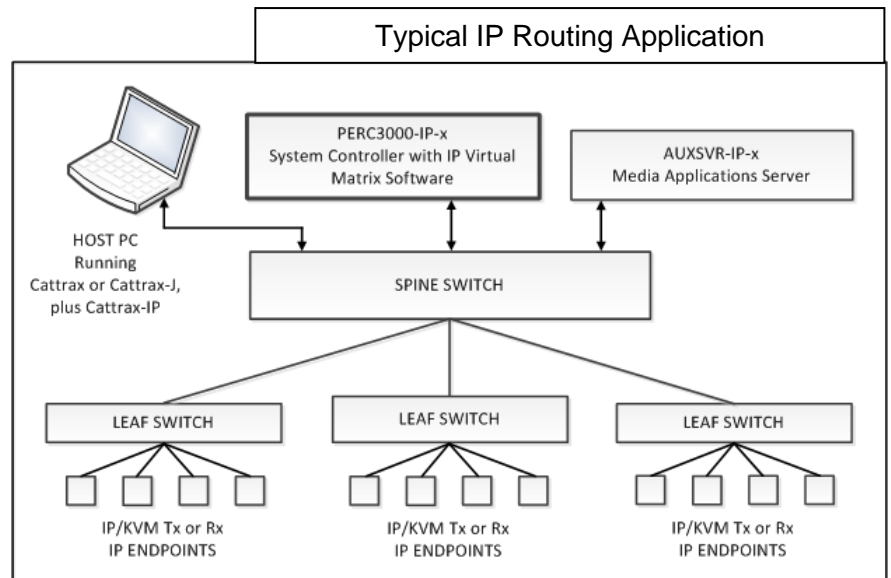
Cattrax-IP maps the IP multicast address of Secura Receive or Transmit Endpoints to common configuration names and mnemonics such as Satellite 15 (SAT 15) and Monitor 43 (MON 43), which are "routed" through the VM.

IP nodes and endpoints are automatically discovered on the network and presented in a table-style format which is very intuitive to configure.

Once the PERC3000-IP controller is configured, it is not necessary that the Cattrax host remain connected.

Cattrax can also monitor the entire system in real-time for specified events, errors or alarm conditions, based on operator-set flags that may be set for each device. Any detected flag condition is reported in the *Alarms and Events* panel, along with a visual notification that a flag condition has occurred.

With four unique appearance styles, you may select a screen color and contrast to accommodate the lighting in most any operational environment. And Cattrax can run co-resident with other programs on your PC, eliminating the need to dedicate a PC only to router control.



## Cattrax Features (All Versions)

- **Automatic Device Discovery and Display** - Automatically “discovers” PESA devices and control panels operating over the facility’s internal network
- **Alarm Monitoring** – Monitors alarms and events from the discovered devices and displays them in a table format.
- **Menu Driven Configuration and Control** – Uses a standard Windows® operating system tree structure for quick access to menus. Current configuration of multiple devices may be displayed simultaneously, reconfigured and controlled in real-time to optimize device functions.
- **Remote Access over VPN** – Network parameters can be configured to allow use of Cattrax over a VPN link.
- **Cattrax-IP** – When run in conjunction with Cattrax, Cattrax-IP configures the virtual matrix component of the PERC3000-IP controller for assignment of IP endpoints to the routing fabric.

## Cattrax-J adds the following capabilities to the Cattrax application:

- **Secure Access** – No user is allowed to access the operating screens and control menus of Cattrax-J without following a security login procedure.
- **User Classification** – Every installation of Cattrax-J has a permanent account with Administrator Level privileges. In addition, any number of user accounts may also be created and assigned Administrator or User Level classification.
- **Password Protection** – Each user is required to enter and maintain a unique password for system access. An administrator can set the amount of time a user password remains valid before requiring change. Passwords cannot be changed more than once in a 24-hour period and cannot be repeated for at least 10 password changes.
- **Unauthorized Login Attempt Lockout** – Cattrax-J locks a users’ account after a specified number of failed logins.
- **Administrator Privileges** – An administrator level user may create or delete user level accounts, unlock accounts that are in lockout status, change password for any user level account, and set certain operating parameters for the security and access functions of Cattrax-J.

## Minimum Host PC Requirements (All Versions)

The Cattrax applications must be installed on a host PC running the Microsoft Windows® operating system, with a minimum of 512 MB RAM.



ORDERING INFORMATION	
Cattrax-IP part numbers	Description
CATTRAX-IP-[XXXX] [XXXX] = [10;25;100;150;250;500; or 1000]	Cattrax-IP-[XXXX] (Includes Base Cattrax and Cattrax IP) for systems up to XXXX Devices, where XXXX = 10, 25, 100, 150, 250, 500, 1000 (example: CATTRAX-IP-150 for up to 150 devices)
Cattrax-J part numbers	Description
CATTRAX-J-[XXXX] [XXXX] = [10;25;100;150;250;500; or 1000]	Cattrax-J-[XXXX] (Includes Base Cattrax and Cattrax-J IP) for systems up to XXXX Devices, where XXXX = 10, 25, 100, 150, 250, 500, 1000 (example: CATTRAX-J-150 for up to 150 devices)

CATTRAX-IP\_Cutsheet\_20200212R001